

NOTES:

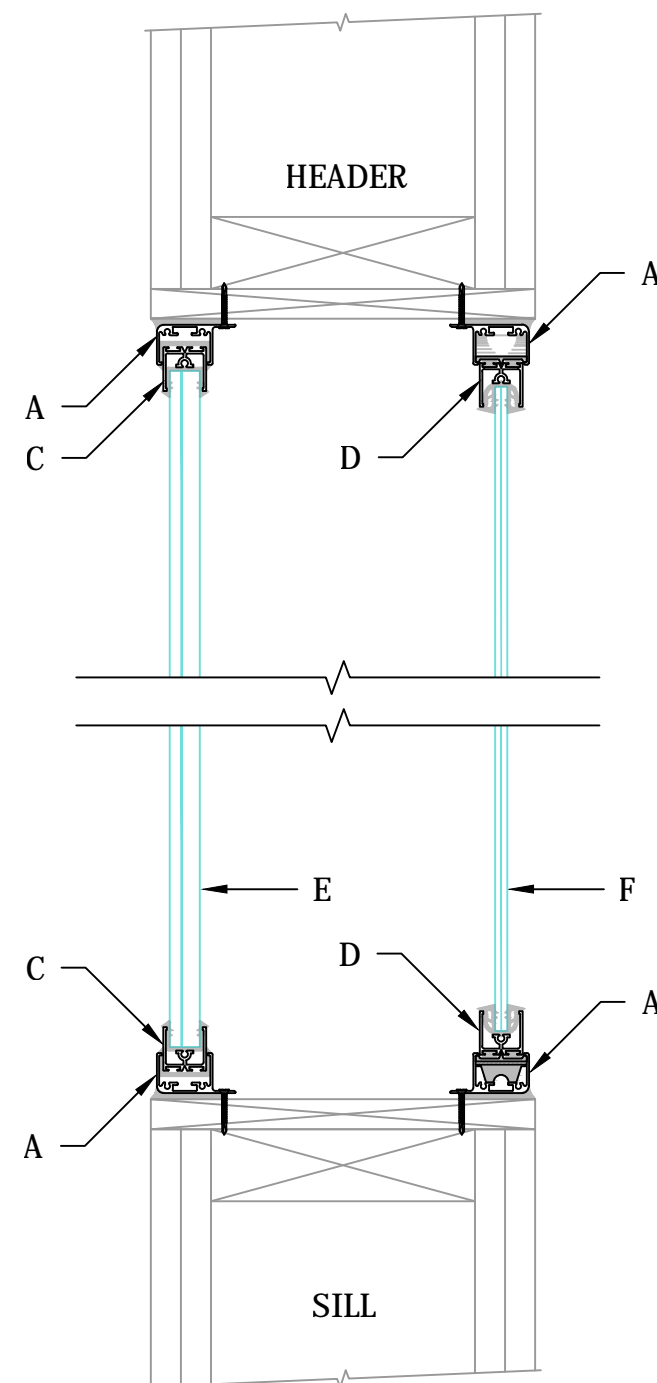
SOUNDPROOF FIXED STUDIO WINDOWS ARE CUSTOM MANUFACTURED TO ACCOMMODATE ANY WALL CONFIGURATION.

SLANTED WINDOW ANGLE IS FULLY ADJUSTABLE. IT CAN BE INSTALLED FROM -8 DEG. TO +8 DEG. (SLANTED UP OR DOWN). IT IS ATTACHED TO THE SIDES OF THE WALL OPENING TO THE DESIRED ANGLE DURING INSTALLATION.

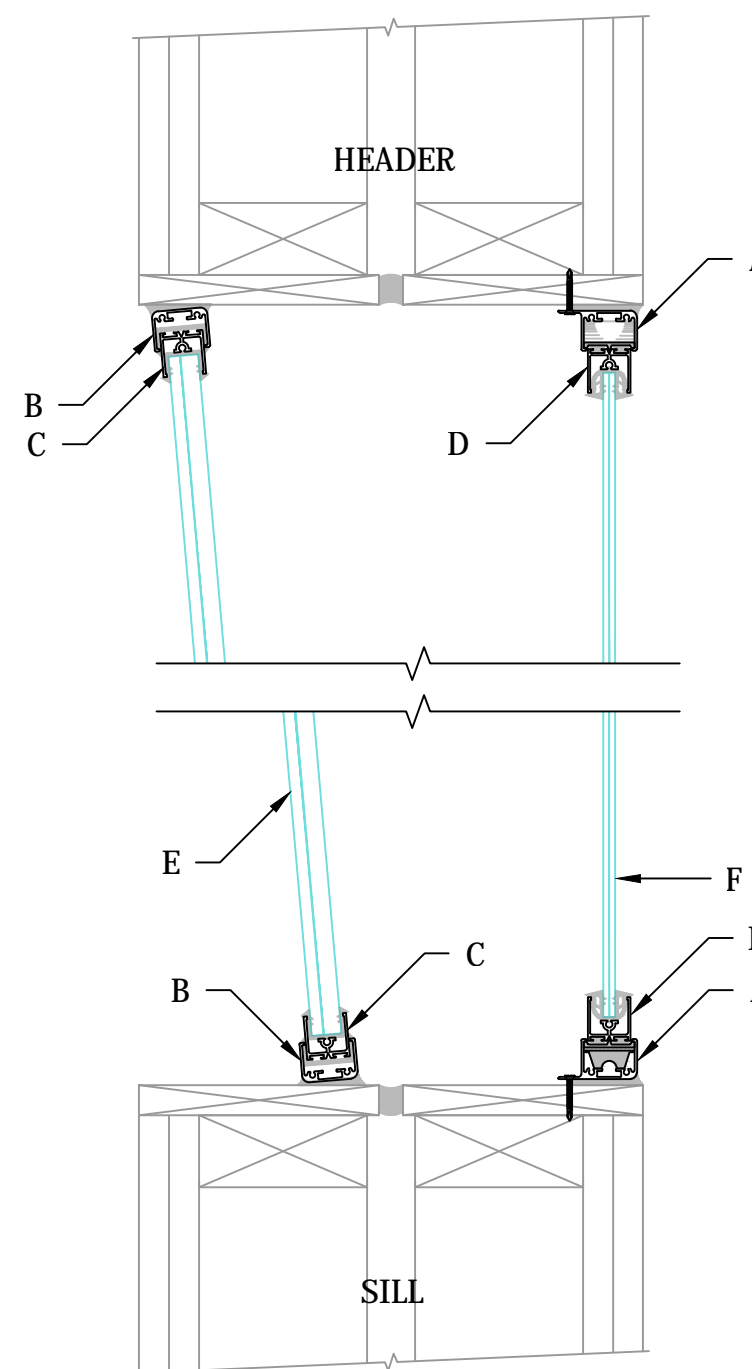
LEGEND:

- A. FRAME COMPONENT WITH MOUNTING FLANGE.
- B. FINLESS FRAME COMPONENT (TOP & BOTTOM ONLY).
- C. SOUND ISOLATED "FLOATING" SASH COMPONENT INTEGRATED INTO FRAME. NON-REMOVABLE ONE PIECE WINDOW ASSEMBLY.
- D. REMOVABLE SOUND ISOLATED SASH COMPONENT TYP.
- E. SOUNDPROOF CUSTOM 5/8" LAMINATED WINDOW GLAZING. (TYP. AT SOUND STUDIO SIDE INSTALLATION, OPTIONAL FOR CONTROL ROOM SIDE).
- F. 1/4" LAMINATED GLASS SHOWN. OFTEN 5/8" USED ON BOTH SIDES. WHEN 1/4" IS USED, IT IS TYPICALLY ON THE CONTROL ROOM SIDE.

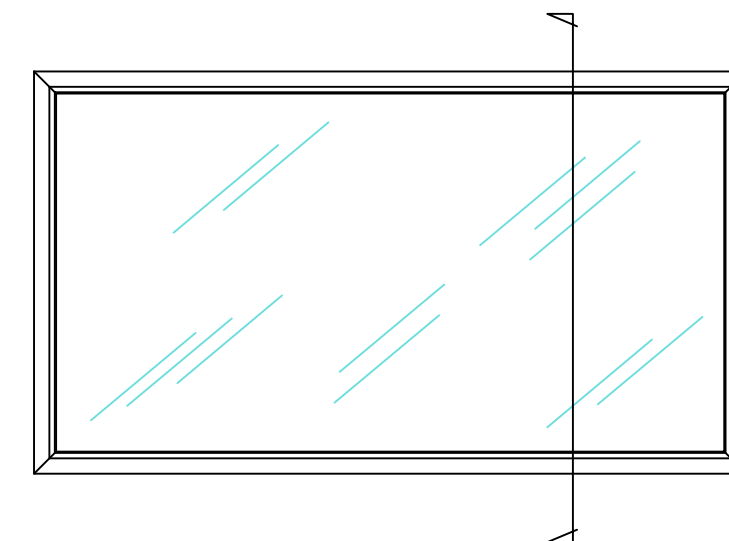
SEE #03, #04 & #05 FOR MORE INFORMATION



8" WALL
CONSTRUCTION
INSTALLATION



10.5" WALL CONSTRUCTION
INSTALLATION
SLANTED STUDIO WINDOW



NOTES:

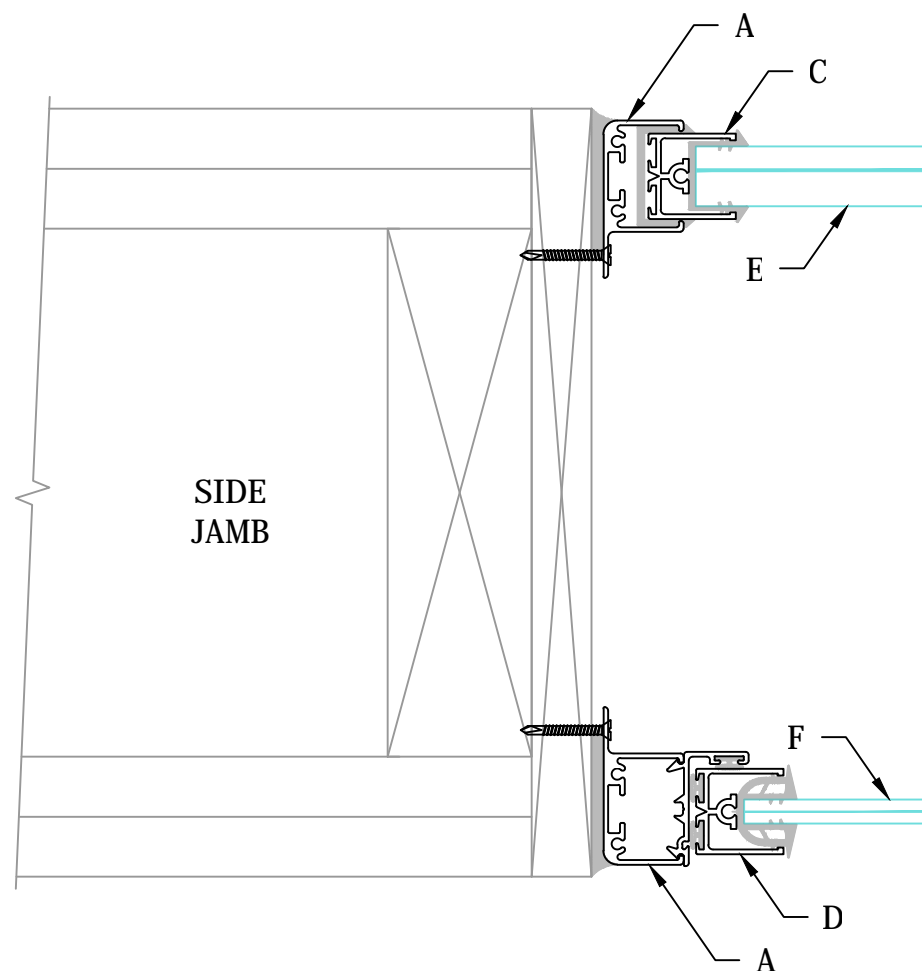
SOUNDPROOF FIXED STUDIO WINDOWS ARE CUSTOM MANUFACTURED TO ACCOMMODATE ANY WALL CONFIGURATION.

SLANTED WINDOW ANGLE IS FULLY ADJUSTABLE. IT CAN BE INSTALLED FROM -8 DEG. TO +8 DEG. (SLANTED UP OR DOWN). IT IS ATTACHED TO THE SIDES OF THE WALL OPENING TO THE DESIRED ANGLE DURING INSTALLATION.

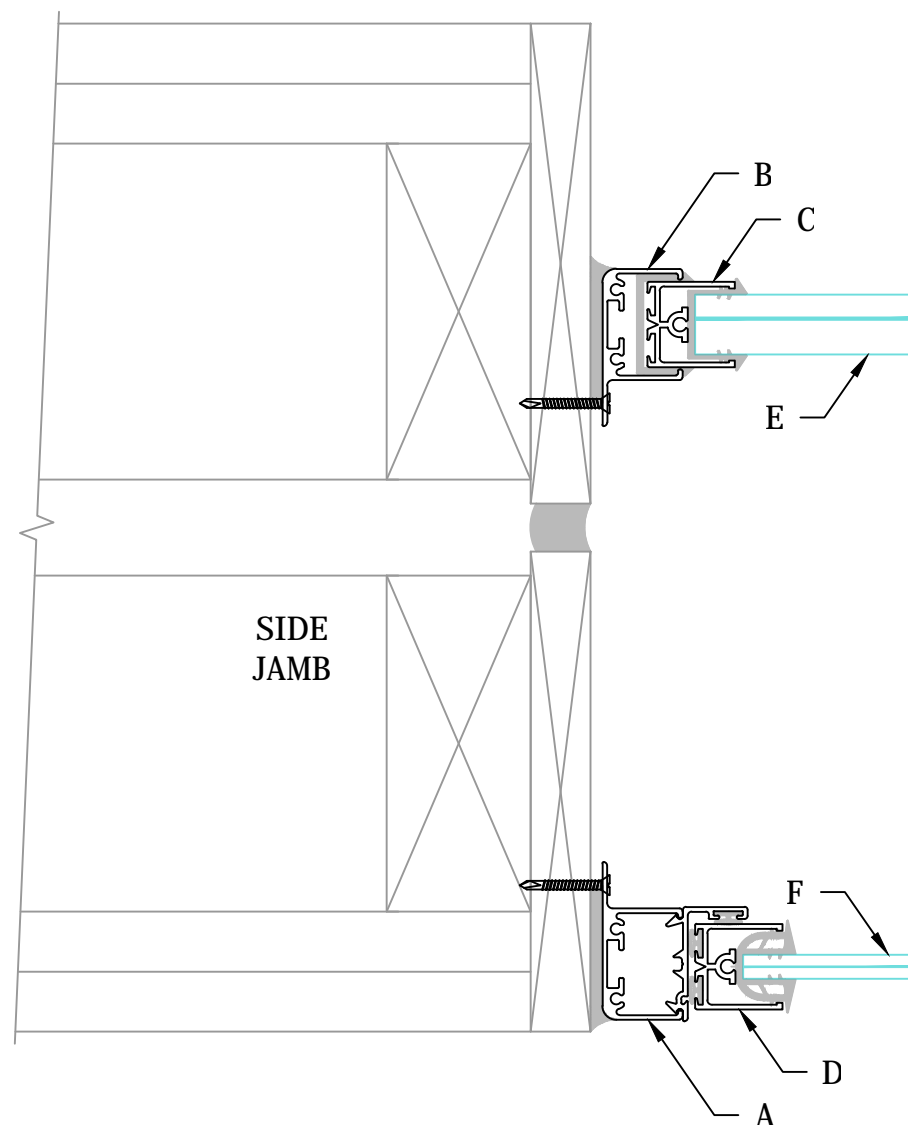
LEGEND:

- A. FRAME COMPONENT WITH MOUNTING FLANGE.
- B. STANDARD MOUNT FRAME COMPONENT EACH SIDE TYPICAL FOR "SLANTED WINDOW" INSTALLATION.
- C. SOUND ISOLATED "FLOATING" SASH COMPONENT INTEGRATED INTO FRAME. NON-REMOVABLE ONE PIECE WINDOW ASSEMBLY.
- D. REMOVABLE SOUND ISOLATED SASH COMPONENT TYP.
- E. SOUNDPROOF CUSTOM 5/8" LAMINATED WINDOW GLAZING. (TYP. AT SOUND STUIC SIDE INSTALLATION, OPTIONAL FOR CONTROL ROOM SIDE).
- F. 1/4" LAMINATED GLASS SHOWN. OFTEN 5/8" USED ON BOTH SIDES. WHEN 1/4" IS USED, IT IS TYPICALLY ON THE CONTROL ROOM SIDE.

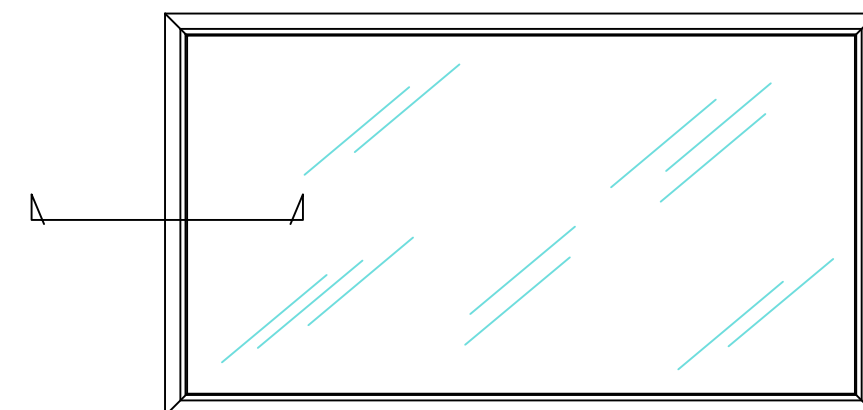
SEE #03, #04 & #05 FOR MORE INFORMATION



8" WALL CONSTRUCTION
INSTALLATION



10.5" WALL CONSTRUCTION
INSTALLATION
SLANTED STUDIO WINDOW



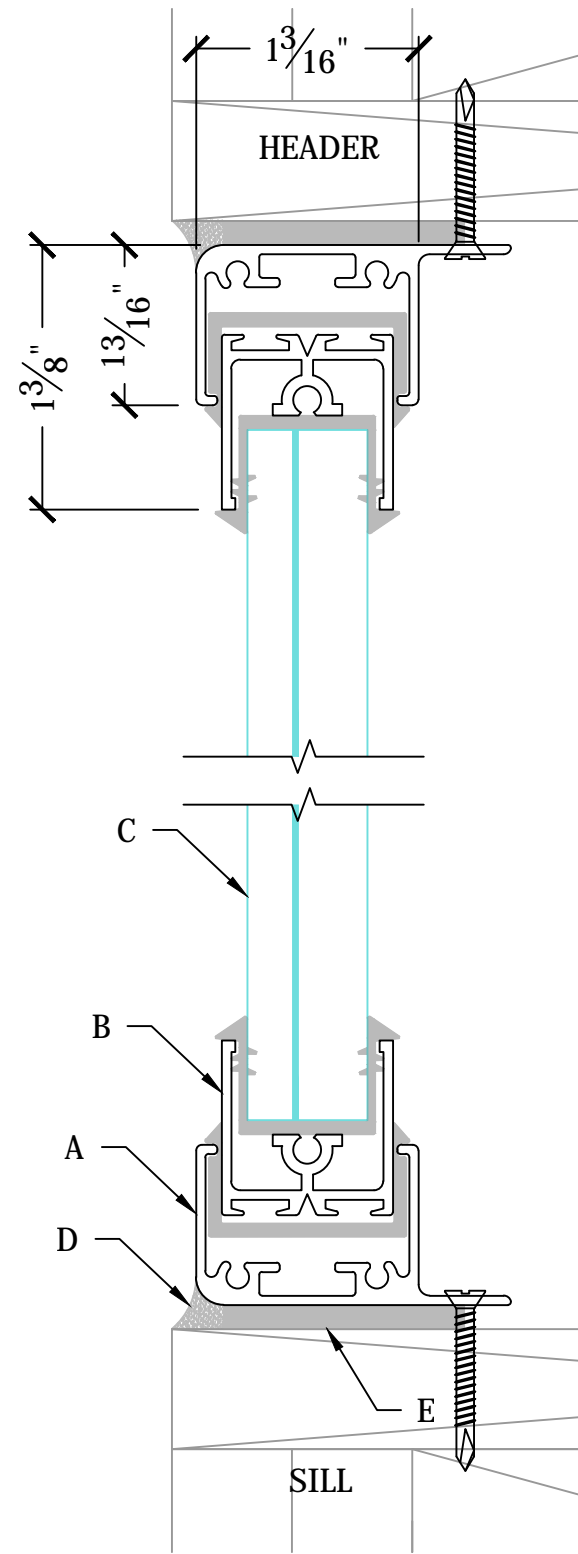
SOUNDPROOF[®]
WINDOWS, INC.

soundproofwindows.com

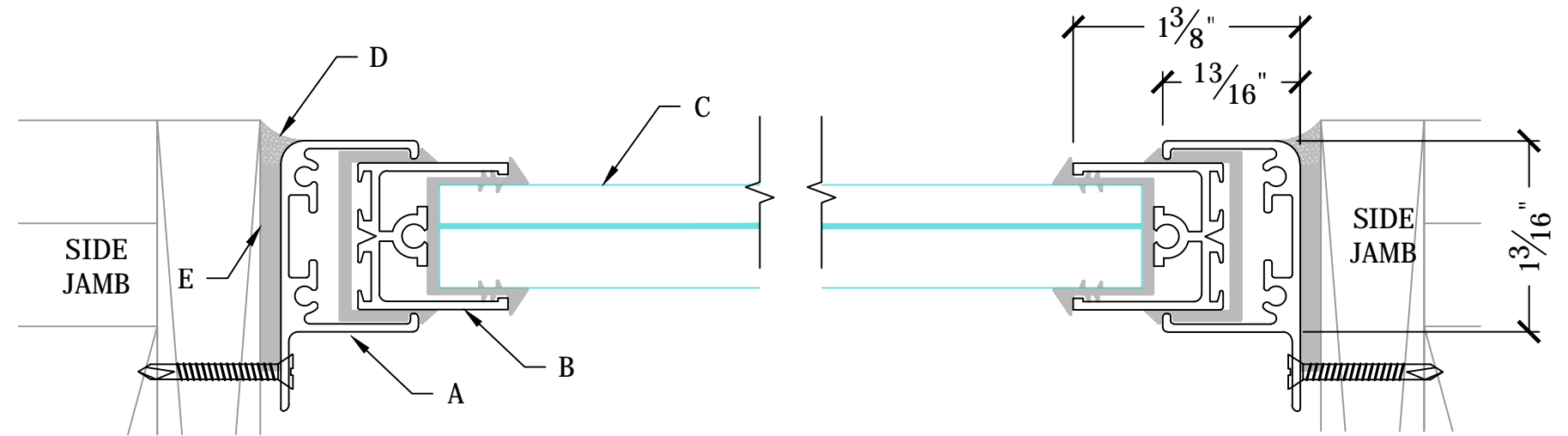
1.877.438.7843

1.877.226.4063 fax

STUDIO - 02



A SILL AND HEADER DETAIL
SCALE: 1:1



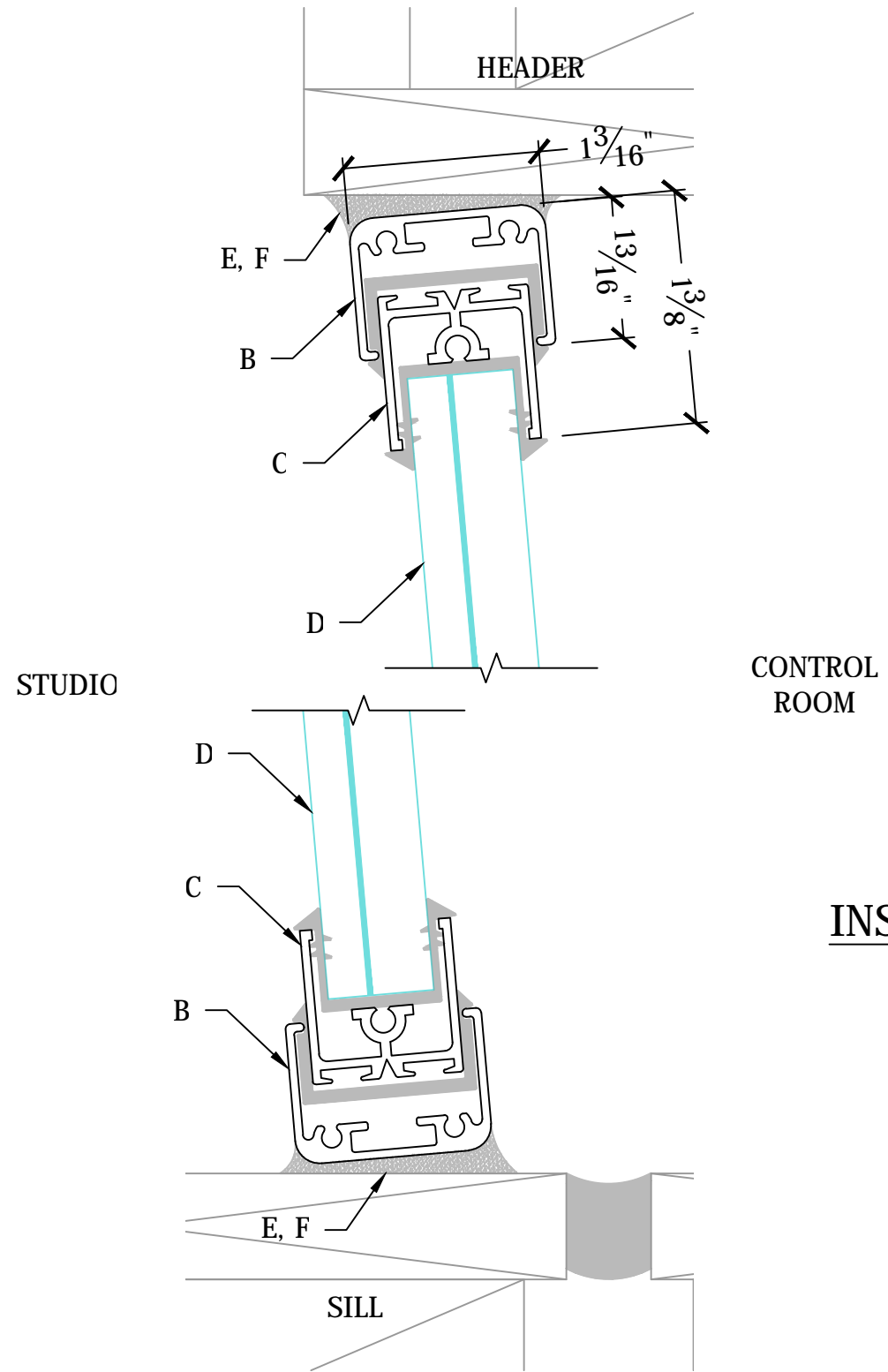
B SIDE WALL DETAIL
SCALE: 1:1

**VERTICAL MOUNTED WINDOW
INSTALLATION MOUNTING DETAILS**

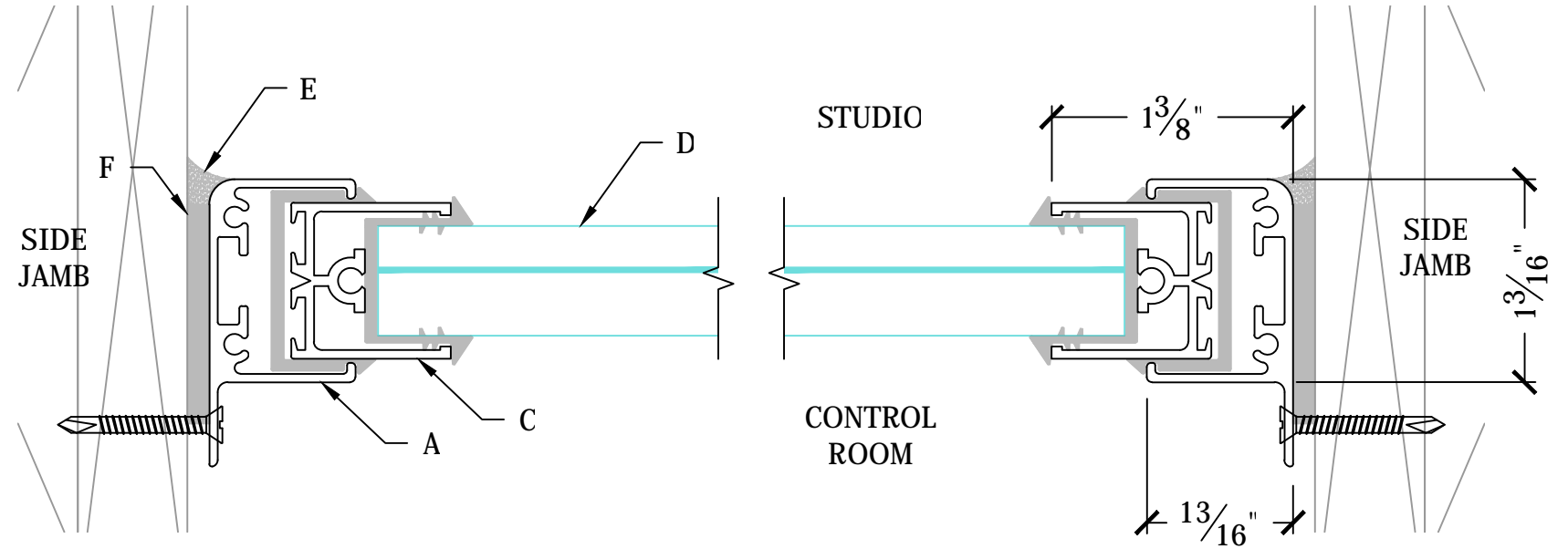
LEGEND:

- A. STANDARD MOUNT FRAME COMPONENT WITH SASH BOOT, TYPICAL AT EACH SIDE.
- B. SOUND INSULATED SASH COMPONENT WITH GLAZING BOOT, TYPICAL.
- C. SOUNDPROOF WINDOWS CUSTOM 5/8" LAMINATED GLAZING.
- D. PROVIDE CONTINUOUS CAULK BEAD WHERE REQUIRED.
- E. 1/8" THICK MOUNTING FOAM TAPE AS REQUIRED.

SOUNDPROOF STUDIO WINDOWS ARE CUSTOM MANUFACTURED TO THE EXISTING OR NEW CONDITIONS. MOUNTING SCREWS (SHOWN) ARE DEPENDENT UPON INSTALLATION CONDITIONS.



A SILL AND HEADER DETAIL
SCALE: 1:1



B SIDE WALL DETAIL
SCALE: 1:1

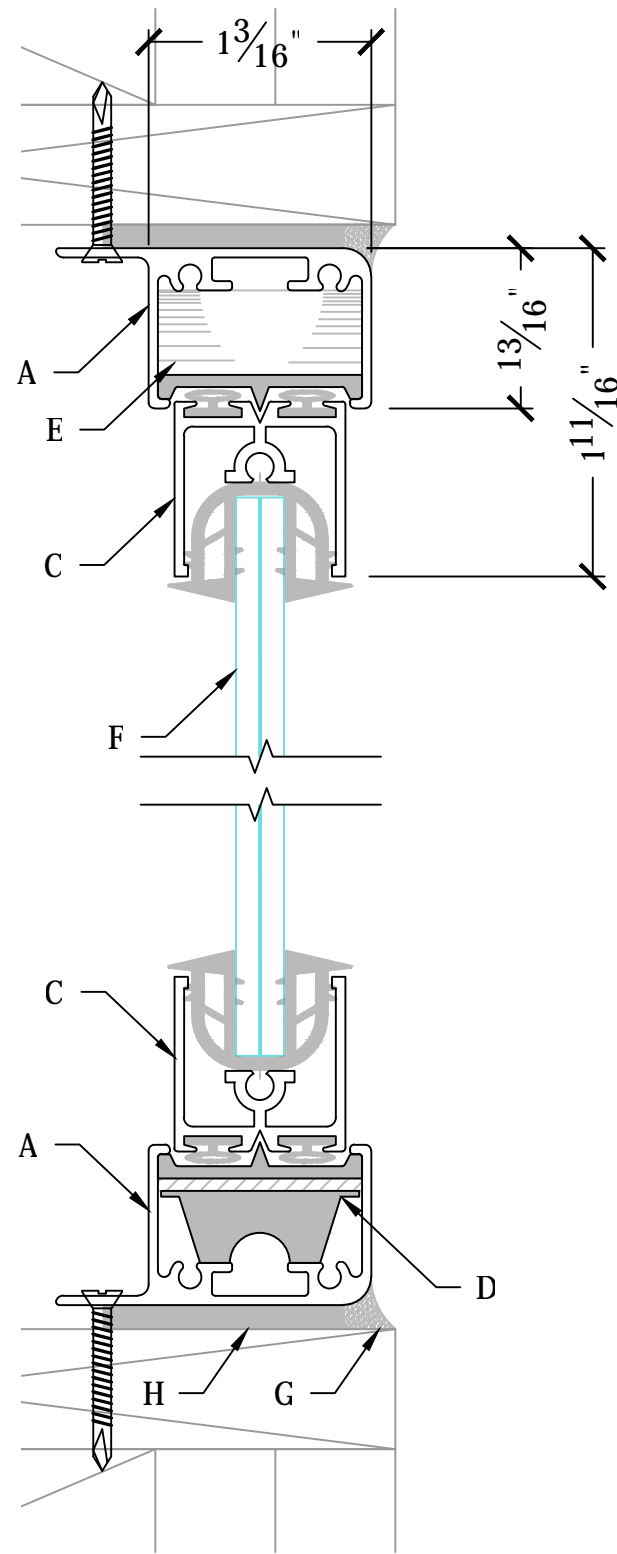
**SLANT MOUNTED WINDOW
INSTALLATION MOUNTING DETAILS**

LEGEND:

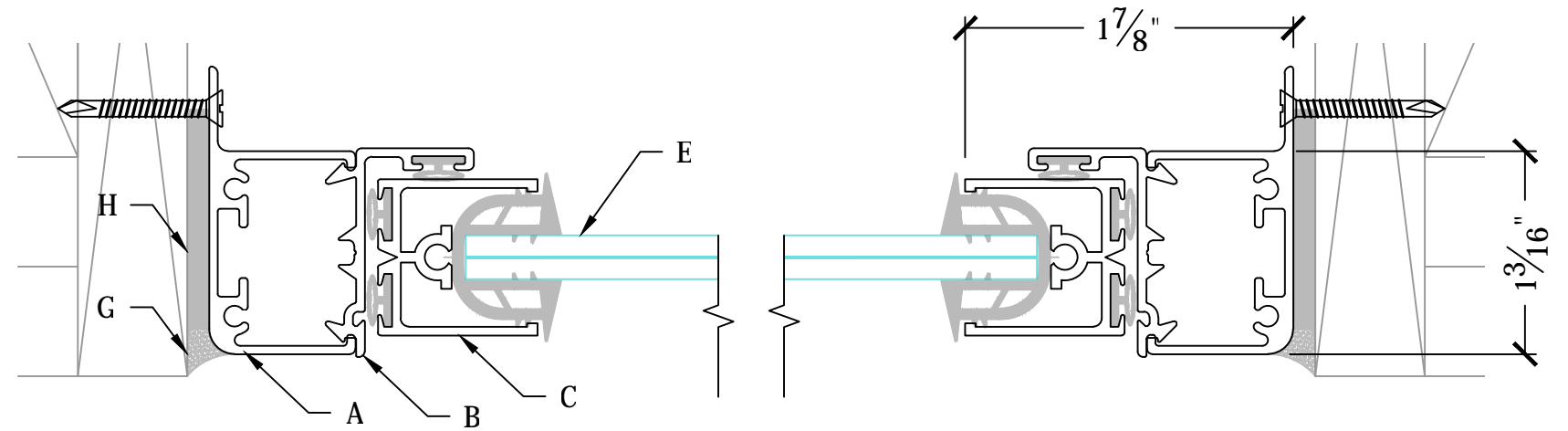
- A. STANDARD MOUNT FRAME COMPONENT WITH SASH BOOT, TYPICAL AT EACH SIDE.
- B. FINLESS MOUNT FRAME COMPONENT WITH SASH BOOT, TYPICAL AT THE TOP AND BOTTOM.
- C. SOUND INSULATED SASH COMPONENT WITH GLAZING BOOT, TYPICAL.
- D. 5/8" GLAZING TYPICAL.
- E. PROVIDE CONTINUOUS CAULK BEAD WHERE REQUIRED.
- F. 1/8" THICK MOUNTING FOAM TAPE AS REQUIRED.

SOUNDPROOF STUDIO WINDOWS ARE CUSTOM MANUFACTURED TO THE EXISTING OR NEW CONDITIONS. MOUNTING SCREWS (SHOWN) ARE DEPENDENT UPON INSTALLATION CONDITIONS.

SLANTED WINDOW ANGLE IS FULLY ADJUSTABLE. IT CAN BE INSTALLED FROM -8 DEG. TO +8 DEG. (SLANTED UP OR DOWN). IT IS ATTACHED TO THE SIDES OF THE WALL OPENING TO THE DESIRED ANGLE DURING INSTALLATION.



A SILL AND HEADER DETAIL
SCALE: 1:1



B SIDE WALL DETAIL
SCALE: 1:1

**REMOVABLE VERTICAL MOUNTED WINDOW
INSTALLATION MOUNTING DETAILS**

LEGEND:

- A. SHOWN VERTICAL. REMOVABLE PANEL WINDOW CAN BE MOUNTED VERTICALLY OR SLANTED (USING SLANTED FRAME DESIGN). BOTH WINDOWS IN WALL OPENING CAN BE VERTICAL OR SLANTED.
- B. FIXED FRAME COMPONENT.
- C. SOUND INSULATED REMOVABLE SASH COMPONENT WITH GLAZING BOOT, TYP.
- D. SOLID INSERT WITH UHMWP TRACK.
- E. LEAF SPRING INSERT WITH UHMWP TRACK.
- F. 1/4" GLAZING, 5/8" GLAZING OPTION AS NECESSARY, TYP.
- G. PROVIDE CONTINUOUS CAULK BEAD WHERE REQUIRED.
- H. 1/8" THICK MOUNTING FOAM TAPE AS REQUIRED.

SOUNDPROOF STUDIO WINDOWS ARE CUSTOM MANUFACTURED TO THE EXISTING OR NEW CONDITIONS. MOUNTING SCREWS (SHOWN) ARE DEPENDENT UPON INSTALLATION CONDITIONS.